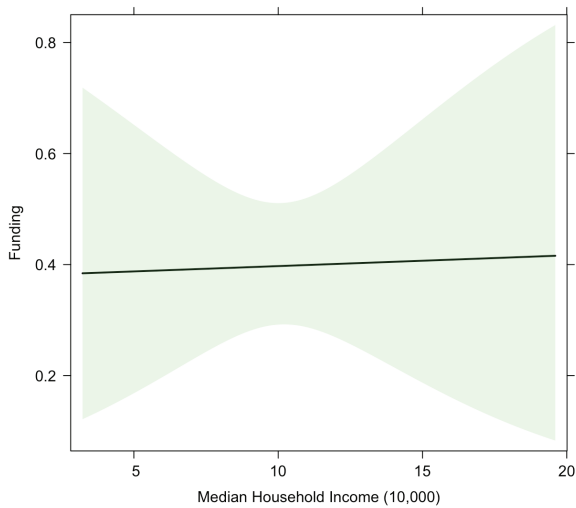


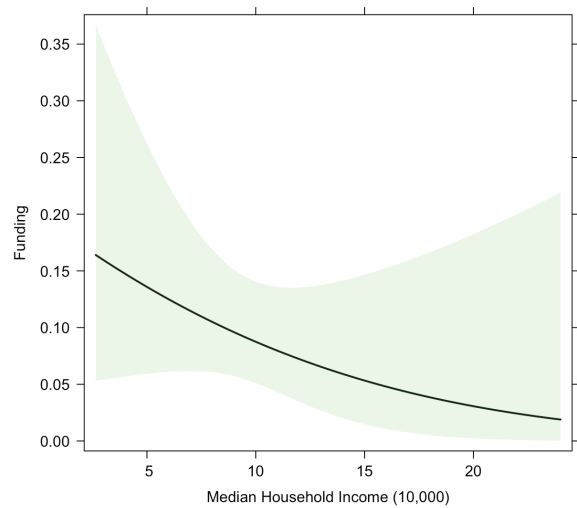
Appendix

As prepared by the Environmental Policy Innovation Center, the graphs contained in this part of the Appendix reflect factors that did not have a statistically significant impact on the distribution of funds from the DWSRF or the CWSRF.

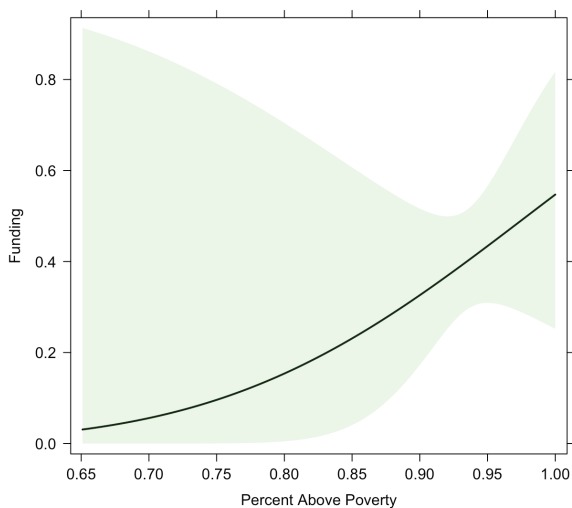
LIKELIHOOD OF RECEIVING FUNDING,
CLEAN WATER PROJECTS



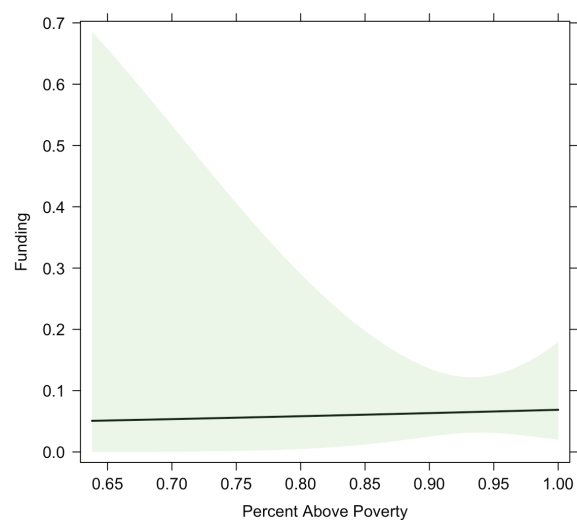
LIKELIHOOD OF RECEIVING FUNDING,
DRINKING WATER PROJECTS



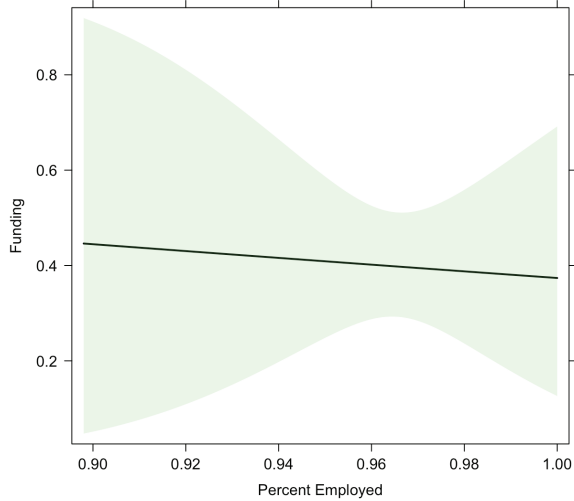
LIKELIHOOD OF RECEIVING FUNDING,
CLEAN WATER PROJECTS



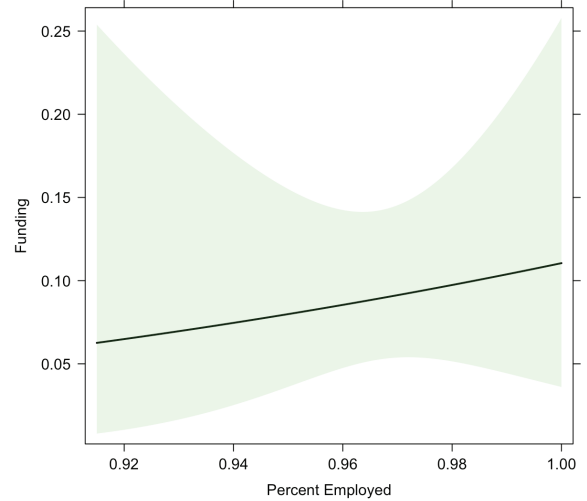
LIKELIHOOD OF RECEIVING FUNDING,
DRINKING WATER PROJECTS



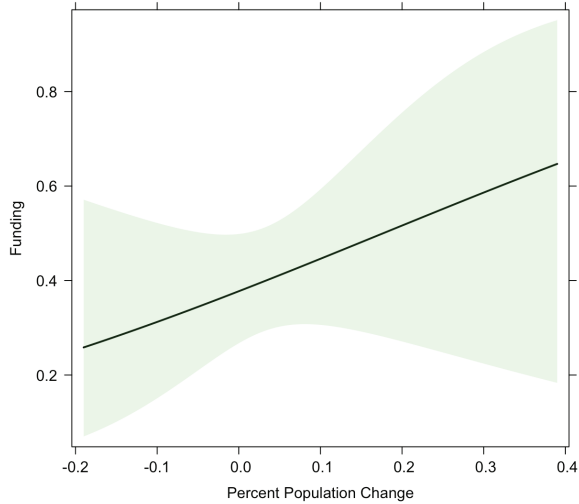
**LIKELIHOOD OF RECEIVING FUNDING,
CLEAN WATER PROJECTS**



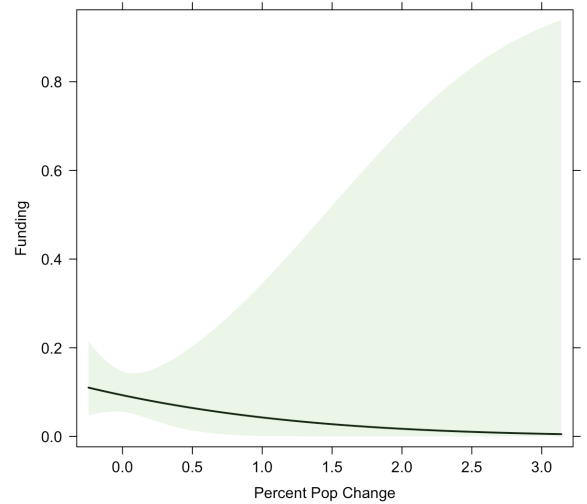
**LIKELIHOOD OF RECEIVING FUNDING,
DRINKING WATER PROJECTS**



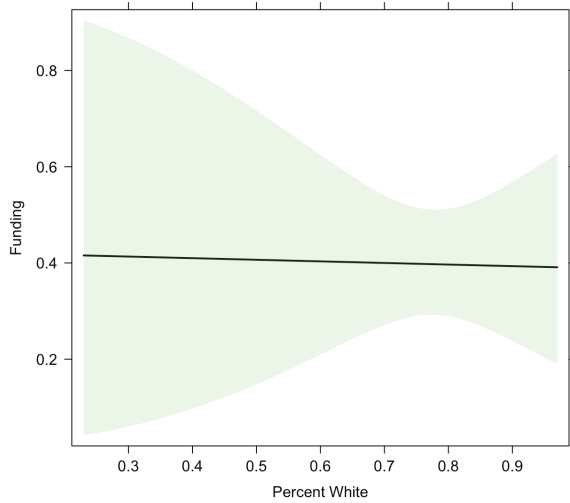
**LIKELIHOOD OF RECEIVING FUNDING,
CLEAN WATER PROJECTS**



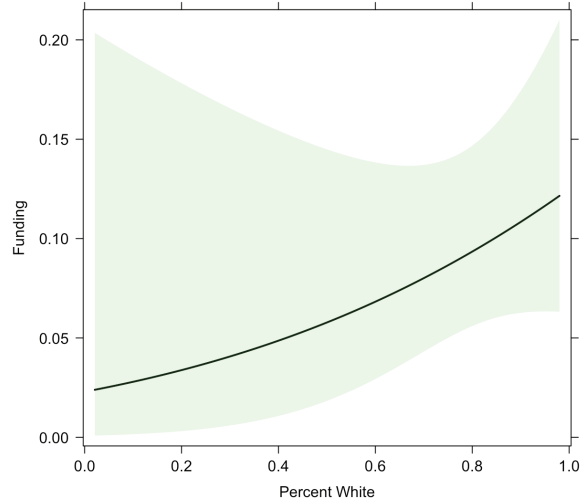
**LIKELIHOOD OF RECEIVING FUNDING,
DRINKING WATER PROJECTS**



LIKELIHOOD OF RECEIVING FUNDING, CLEAN WATER PROJECTS



LIKELIHOOD OF RECEIVING FUNDING, DRINKING WATER PROJECTS



NEW JERSEY WATER BANK SFY2023 PRINCIPAL FORGIVENESS - PROGRAMMATIC USES

As referenced in New Jersey's SFY2023 IUP, the table below summarizes the programmatic uses of \$474 million in total PF. Of the total, \$254 million (54%) was set aside for DACs.¹

CWSRF	Total	DAC Portion
Combined Sewer Overflow:	▪ Abatement (non-DACs)	\$248m
	▪ Next \$6m	30
	▪ Affordability (DACs)	30
Affordability - CW Projects (DACs)	36	36
Energy or Water Efficiency	10	
Water Quality Restoration	6	
Stormwater/Overflow Grants	1	
CWSRF Subtotal	\$361m	\$165m (46%)
DWSRF	Total	DAC Portion
Climate Change/Resilience and Environ./Treatment Violations (DACs)	\$45m	\$45m
Lead Service Line Replacement (LSLR; DACs)	25	25
Emerging Contaminants (25% DACs)	17	4
Gen. Supplemental: LSLR or PFAS (DACs)	10	10
Nano Projects (< 10,000 customers)	8	
High Rank Affordability Projects (DAC)	5	5
Very Small Water Systems (<1,000)	3	
DWSRF Subtotal	\$474m	\$254m (54%)
SRF GRAND TOTAL	\$474m	\$254m (54%)

¹ Excluding \$293 million in one-time federal ARPA funds for Combined Sewer Overflow - Long Term Control Plans (\$248 million) and Climate Change/Resilience and Environmental/Treatment Violations (\$45 million), the portion of the remaining (i.e., ongoing) \$181 million in PF that is dedicated to DACs rises to 61%.