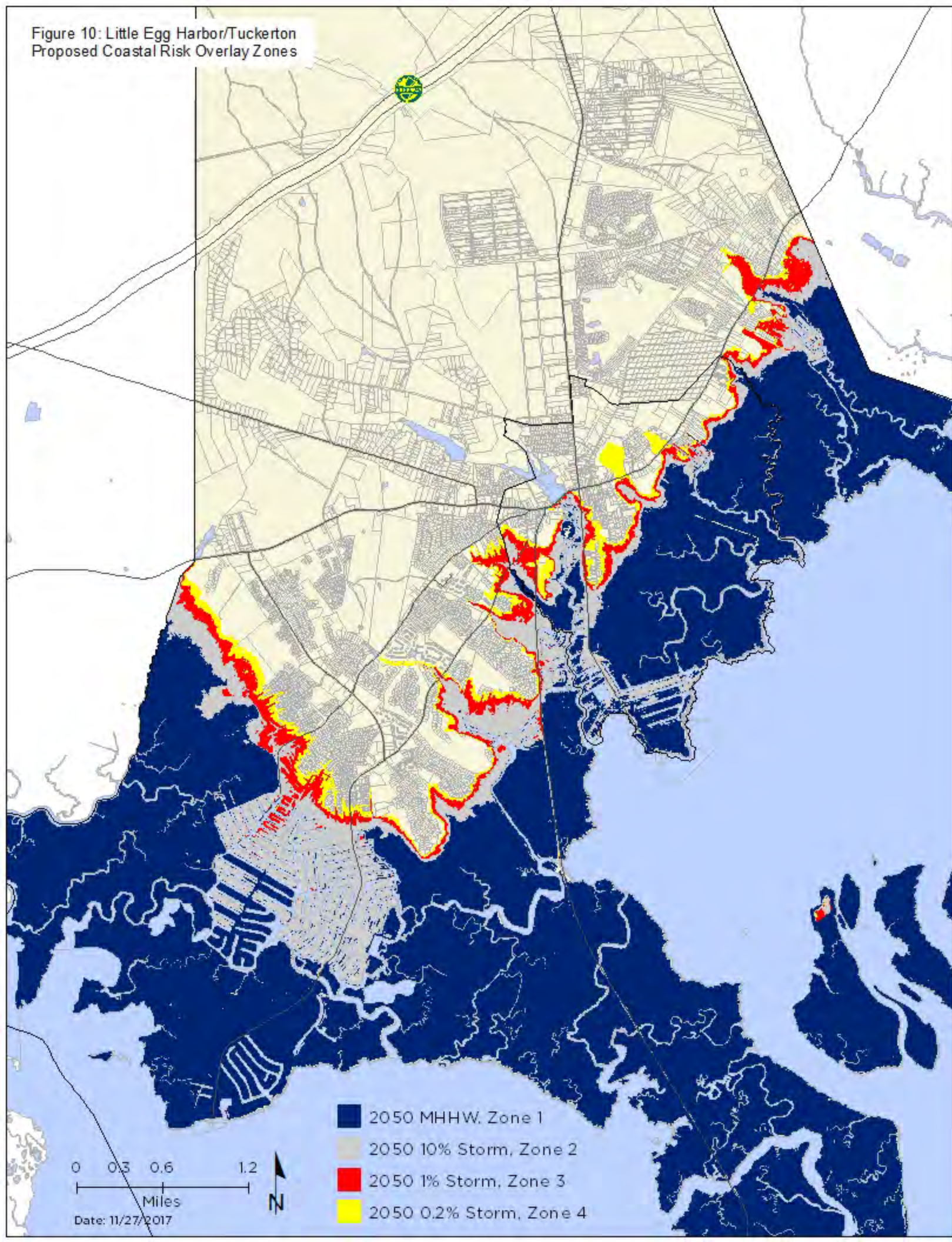
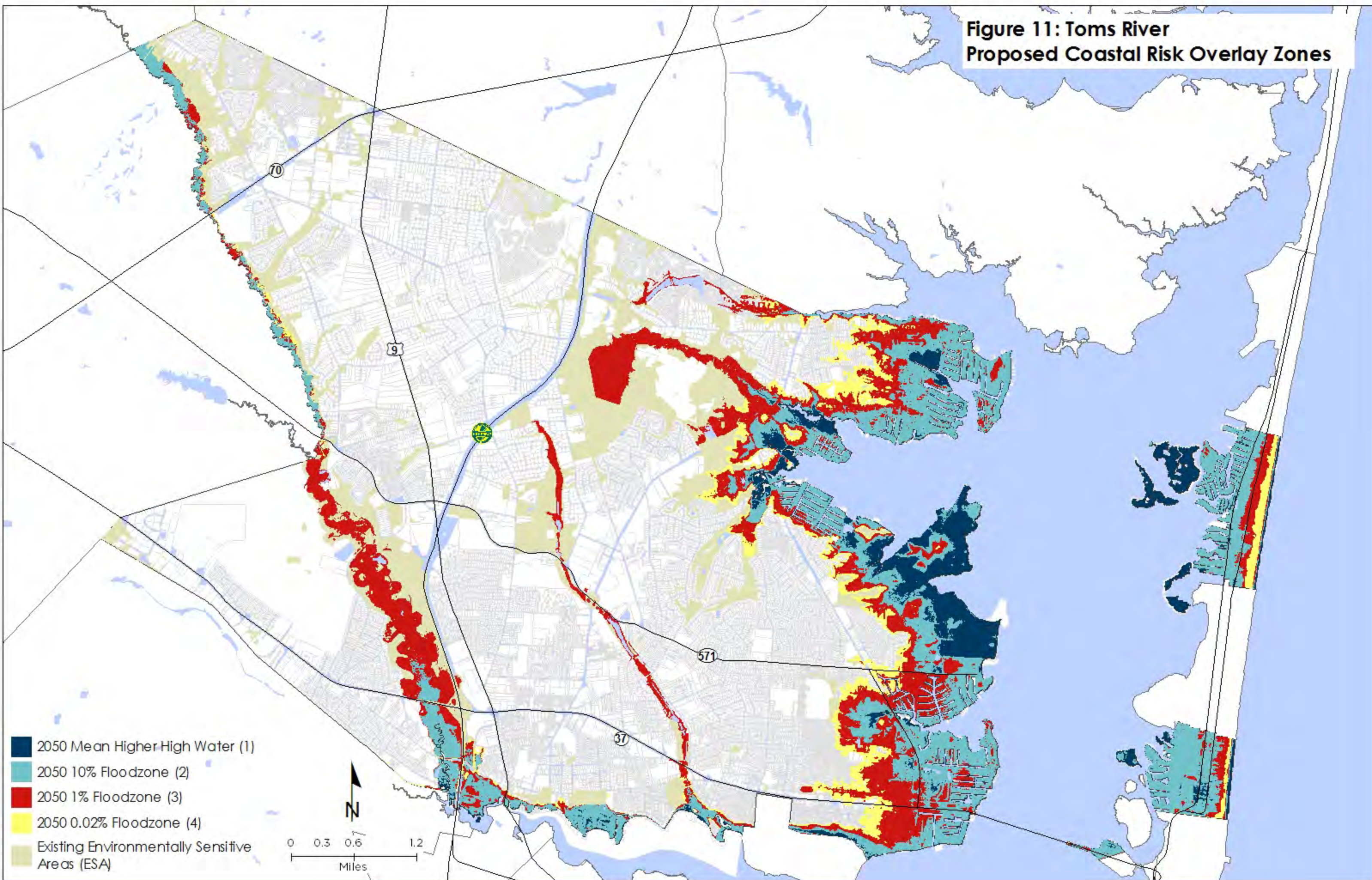


Figure 10: Little Egg Harbor/Tuckerton
Proposed Coastal Risk Overlay Zones

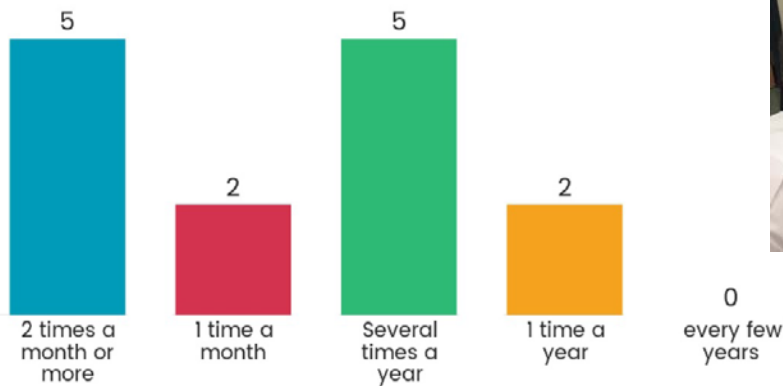


**Figure 11: Toms River
Proposed Coastal Risk Overlay Zones**

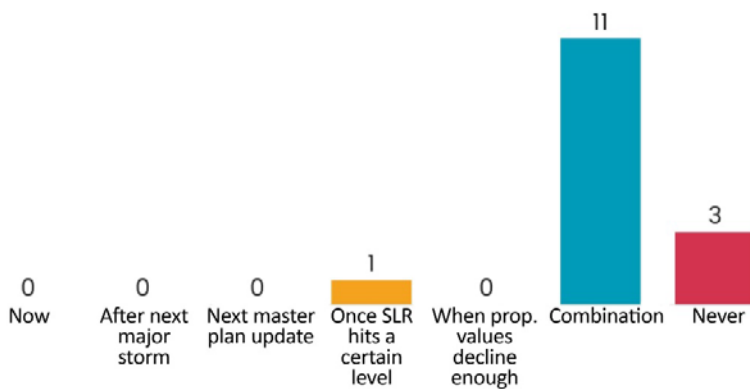


Public Input: The project team held public meetings with residents from Little Egg Harbor and Tuckerton to review the outcomes and implications of the risk assessment conducted for both towns. Participants were divided into breakout groups with the intent of discussing whether and when residents of coastal communities would be prepared to discuss changes in development patterns in order to minimize exposure to future risks and how such changes might be achieved. Responses are provided below.

How often do you observe evidence (flooding, erosion, road damage, etc.) of sea level rise?



When do you think residents will acknowledge there need to be changes in how the town develops?



Thinking about yourself, are you ready to consider changes in how the town develops?

